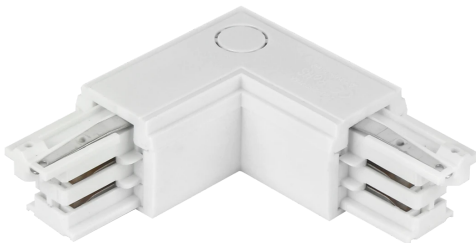


code: 210646    EAN: 5905378210646

Connector L for 3 phase track  
LUMICANTO left white with feeding  
PRIME

The L-connector is used to connect two sections of track rail into an 'L' shape at right angles. Power supply connection possible.



Ambient temperature suitable for operation

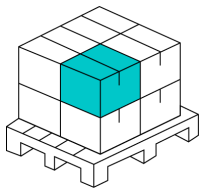
Parameter	Value
Warranty (years)	5
Rated power	220-240V AC
Rated current	16A
Housing material	Tworzywo sztuczne
Mounting type	3 phase rail
Frequency of the supply voltage	50/60Hz
Colour	White
Ambient temperature suitable for operation	5÷40 °C

Parameter	Value
IEC protection class	I
Length	98 mm
Width	98 mm
Height	32 mm
Product weight with packaging	90 g
Power supply connection	yes
Equivalent	XTS 35

Single packaging



Bulk packaging



Outer box quantity

100 pcs.

Europallet

